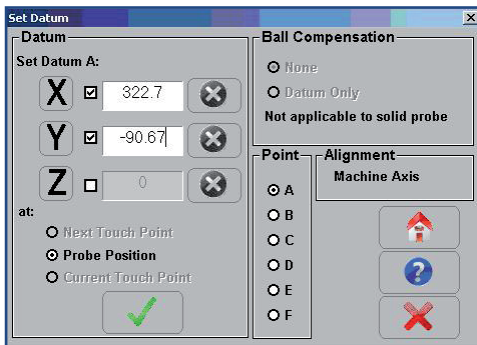


WinDRO

Cost Effective Digitising Software for Manual Inspection Applications



Functionality



Set Datum

The *Set Datum* routine allows the operator to datum / preset any axis with a Renishaw touch or solid probe

Digitised Data View Window

The *Digitised Data View Window* allows ISO and 2D views of digitised tracks with onscreen editing and removal of rogue points. Digitised data can be saved as IGES, DXF, CSV or text



Export Digitised Data

A saved digitised data file can be loaded as IGES, DXF, CSV or text file and then converted and exported under another file format

Reverse Digitising

The reverse digitising option is specifically designed for clay modellers to allow them to 'balance' a part. For example, by digitising one side of a car body, and then reverse digitising the data, the opposite side of the vehicle can be created and 'balance' the model.

The system can also accept CAD section point data and easily reverse digitise onto a new clay model. Using a solid probe, the operator could set each point in 2 axis and then drive the solid probe into the clay to set the third axis.

WinDRO

itp group

Cost Effective Digitising Software for Manual Inspection Applications

The reverse digitising option has the unique *Zero Down* option to aid this process, which allows the operator to move to the next section point by driving each axis to zero. The operator is also aided by the display on the WinDRO read-out, which can be set to change colour when the operator is within a configurable tolerance.



In this example, Track 1 - Point 4 is X +- 1.624 / Y -97.787 / Z +129.972, but the operator does not have to remember these three figures. Simply drive each axis down to zero within an outer tolerance (eg. 5mm) from zero for the display colour to change to green. When within an inner tolerance (eg. 1mm) from zero the display colour will change to white.

The operator can move on to the next section point by hitting the space bar or *Next* button, and back by hitting the *Previous* button.

Minimum System Requirements

- Pentium P4 Processor
- 256MB RAM
- 40GB Hard Disk Space
- Windows 2000 / XP

WinDRO

Cost Effective Digitising Software for Manual & CNC Milling and Inspection Applications

itp group

Remote Handheld Monitor (Optional)

The remote handheld monitor is a cost effective solution that allows the operator to control WinDRO 'at the model'. This option aids productivity as the operator never has to return to the main keyboard during 'repeat' operations, ie datuming, measuring, digitising or reverse digitising.

It is also ergonomically friendly when the operators needs to lie down, be 'inside' the model or the view of the main monitor is obstructed, as they can control the machine from their current working position.



The remote handheld monitor communicates by secure Bluetooth® technology and is charged from the main computer's USB port. For ease of use it can be easily located, if left in / under the model, using the 'Find PDA' button at the main terminal. The PDA will also sound if it goes outside the 20m Bluetooth® range.

For more information or to obtain a quotation for ITP Group WinDRO Digitising Software, contact ITP Group below.