

# DevaMC

itp group

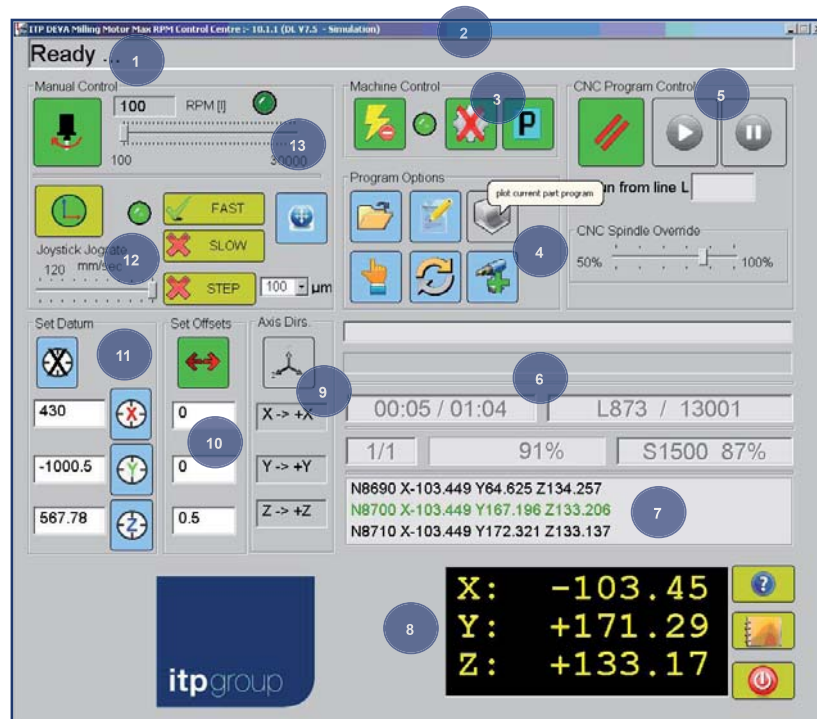
## ITP Group Control Software For Milling System Applications

ITP Group's DevaMC milling control software is used to control the ITP Group range of HA-Series Horizontal Arm and Gantry configuration milling systems.

ITP Group systems can be offered for dedicated milling applications, or as a complete solution for styling studios creating clay models. A multi-purpose system is also available capable of milling, CNC inspection, digitising and reverse digitising. This cost effective solution combines 4 studio requirements into a single machine.

ITP Group's DevaMC software is simple to use, with standard training requiring only 2 hours, yet it offers all of the features that are required in styling & design studios for rapid product development.

### DevaMC Main Screen



1. Status & Message Window
2. Software Version
3. Machine Control
4. Program Options
5. Program Control
6. Part Program Status
7. Previous, Current & Next Line
8. Digital Read-Out
9. Axis Direction
10. Program Offsets
11. Datum Control
12. Joystick Control
13. Manual Spindle Control

# DevaMC

## ITP Group Control Software For Milling System Applications



itp group

### Main Features

- Accepts CNC programs generated from most industry-standard CAD CAM packages, including Sescoi WorkNC, Delcam PowerMill, Tebis & Alphacam
- User-friendly display with large colour coded icons for ease of use on shopfloor. Icons disabled when not available, with balloon tooltips on all buttons and dialogs
- Program status display showing part-run duration sliding scale, run duration & time left, current & total lines, maximum & percentage spindle speed, maximum & percentage feedrate & previous / current / next program lines
- CNC programs can be *dry run* prior to execution to check for errors, machine boundary infringement & estimated run-time
- Programs can be started from a specified line to allow for part-run of programs & recovery from collisions
- Cycle Pause / Start controls with milling motor off during *Cycle Pause*, with spindle Start & Stop delays for smooth operation
- Integrated CNC editor for viewing and editing programs
- Integrated CNC plot program to graphically display program path
- Manual Data Input to allow single line direct machine control for operator controlled scribing & drilling operations
- 3D joystick control with axis lock, axis reverse, normal / slow speed & micron-step mode for exact positioning
- Manual Control allowing spindle On / Off, XYZ jog, XYZ park & XYZ move
- CNC feed-rate percentage speed control & spindle speed override
- *Disable Motors* mode to allow manual datum set & arm positioning
- Datum set in X / Y / Z axis to input values
- Spindle stall monitor to protect CNC machine & part
- Program XYZ offsets can be adjusted during program-run to correct for misalignments

# DevaMC

## ITP Group Control Software For Milling System Applications

itp group

- Interfaces with Renishaw TS27R tool setting probe for ease of setting tip offsets
- XYZ axis directions & assignments can be set as required, ie. +X+Y+Z → -Z +Y -X to allow for optimum part orientation
- *Create Drill Program* option to create custom drill programs from curve(s) in IGES / Text point files, from CAD or digitised data
- *Mirror Program* option to create a mirror of existing program about X / Y / Z axis
- Simple to use - standard training requires only 2 hours
- Full onscreen integrated Help
- International language support available including French, German, Italian, Spanish, Chinese, Russian & Polish - contact ITP Group for full details

### Minimum System Requirements

- Pentium P4 Processor
- 512Mb RAM
- 40GB Hard Disk Space
- Windows XP / Windows 7

