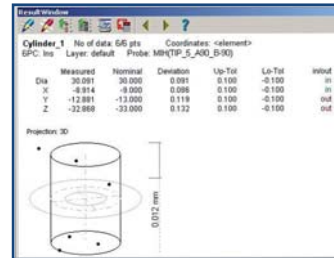
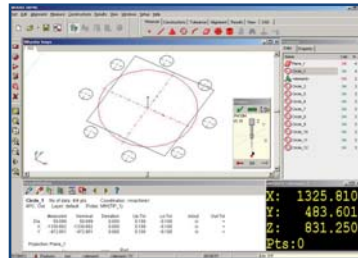
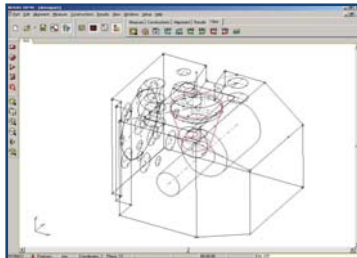
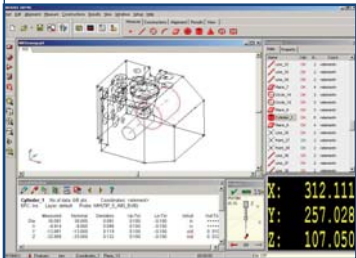




Axel Lite Software



Cost Conscious Graphical Measurement

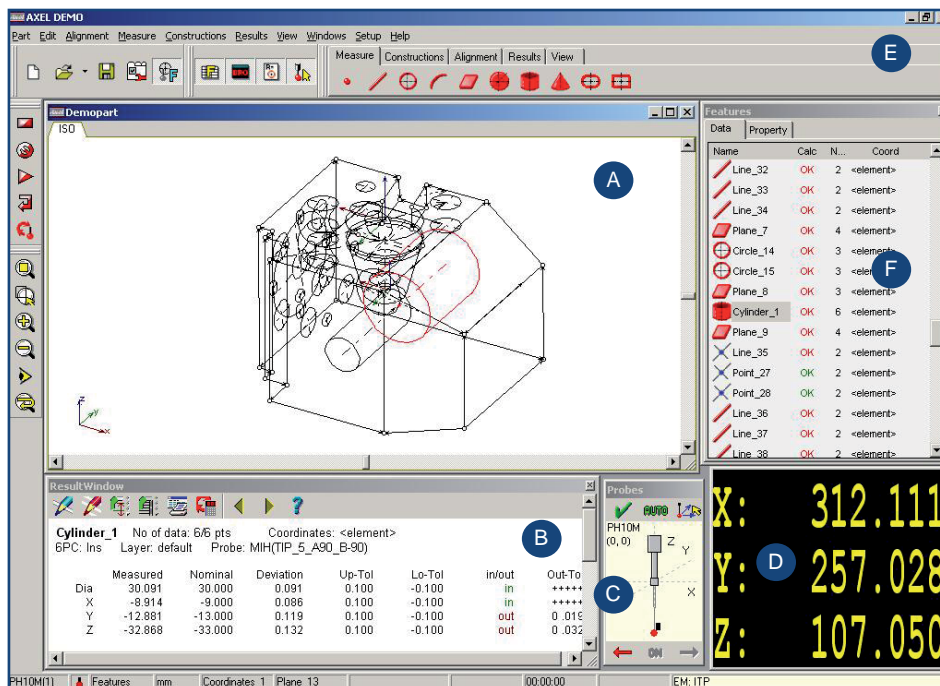
Axel Lite CMM Software

Cost Conscious Graphical Measurement

itp group

Axel Lite software is in essence a scaled down version of the Axel Foundation program, and therefore benefits from the uniform user interface used for all Axel software applications. All of the part files created under the Axel Lite program are fully compatible with Axel Foundation software when upgraded.

Axel Lite Overview



- A. Measurement Window
- B. Results Window
- C. Stylus & Probe Control
- D. Digital Readout (DRO)
- E. Tool Bar
- F. Feature List

- Geometrical measurement
- Feature storage with measured features shown in the graphical display.
- CAD-like feature constructions, eg. distance, intersection, translation, rotation & projection
- Multiple Coordinate Systems & extensive alignment options with graphical representation in the *Measurement Window*
- Graphical zoon & rotate to XY / YZ / ZX views
- Alter name of stored features to match drawing / client name
- Full dimensional tolerancing

Axel Lite CMM Software

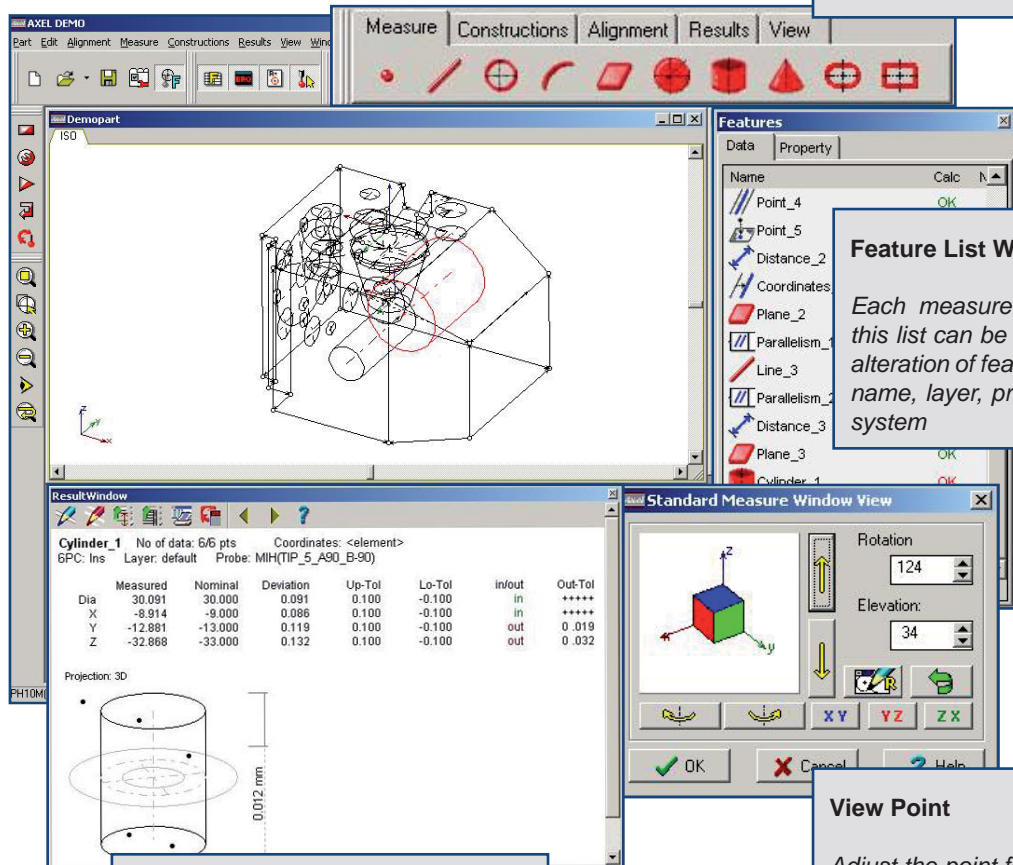
Cost Conscious Graphical Measurement



Axel Lite software is in essence a scaled down version of the Axel Foundation program, and therefore benefits from the uniform user interface used for all Axel software applications. All of the part files created under the Axel Lite program are fully compatible with Axel Foundation software when upgraded.

Axel Lite Overview

Tool Bar
All measurement control functions can be accessed through icon buttons. Customise for individual operators / tasks and save & retrieve as required



Feature List Window
Each measured feature recorded in this list can be used for selection and alteration of feature properties such as name, layer, projection and reference system

Results Window

Cylinder_1 No of data: 6/6 pts Coordinates: <element>
6PC: Ins Layer: default Probe: MIH(TIP_5_A90_B-90)

	Measured	Nominal	Deviation	Up-Tol	Lo-Tol	in/out	Out-Tol
Dia	30.091	30.000	0.091	0.100	-0.100	in	++++
X	-8.914	-9.000	0.086	0.100	-0.100	in	++++
Y	-12.881	-13.000	0.119	0.100	-0.100	out	0.019
Z	-32.868	-33.000	0.132	0.100	-0.100	out	0.032

Projection: 3D

Results Window
Displays the results of the currently measured feature with a graphical display of point's distribution and tolerance sketch. Define the format of selected results from the top buttons menu

View Point
Adjust the point for each view to have true 3D perspective of your measured component

Axel Lite CMM Software

Cost Conscious Graphical Measurement



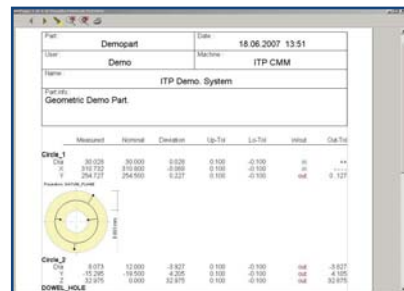
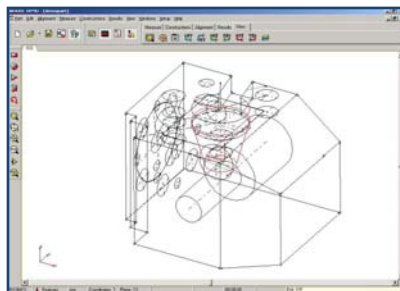
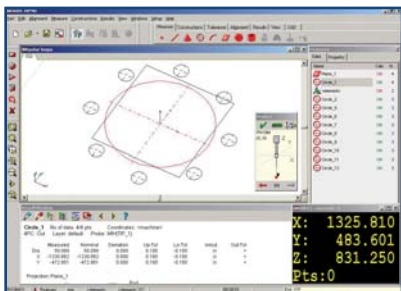
Axel Lite Overview

Measurement Features
■ Measure common geometric features such as point / line / plane / arc / circle / cylinder / sphere / cone & slot
■ Measure features within existing features, Eg. <i>line between two circles</i>
■ Form results outlining straightness / roundness / flatness / cylindricity / sphericity
■ Repeat & Go modes to re-measure complete components

Construction Features
■ Distance (shortest / longest / centre) - between XYZ feature / line / plane / circle
■ Angle - line / line, line / plane, plane / plane, line / axis, axis / plane
■ Projection - XYZ feature onto line / plane
■ Intersection - line / line, line / circle, line / plane, plane / plane, axis / plane
■ Symmetry - mid-point / mid-line / mid-plane
■ Tangent - tangent line between XYZ point & circle
■ Translation - any measured feature or alignment datum
■ Rotation - Any measured feature or alignment datum

Alignment
■ Plane / line / point
■ Cylinder axis / line / point
■ Multiple sub-coordinate systems

Results
■ Configurable text reports
■ Shape picture - roundness / flatness
■ User definable header
■ Save to text file for MS Word compatibility
■ Graphical display of tolerance IN / OUT



Axel Lite CMM Software

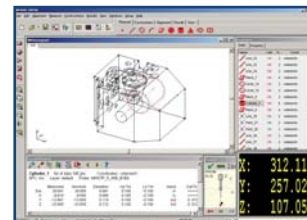
Cost Conscious Graphical Measurement



Recommended System Requirements

ITP Group can supply complete mast-mounted or cabinet enclosed PC hardware, or can retrofit your existing system to incorporate increased software capabilities. For Axel CMM software requiring a 3 axis counter card, ITP Group recommend the following minimum PC specification:

■ Intel Celeron 2.4Ghz or equivalent CPU
■ 128MB NVidia GForce Graphics Card with Open GL support
■ 256MB RAM
■ 40 GB Hard Disk
■ 16x DVD-ROM Drive
■ On-Board Sound Card
■ SVGA 17" Monitor supporting 1024 x 768 x 32-Bit colour
■ Windows XP Pro
■ Keyboard, mouse & loudspeaker(s)
■ 1 free PCI slot (after above)
■ 1 free USB port (after above)



For further information on Axel Lite CMM software, or for a full quotation please contact ITP Group on any of the details below.