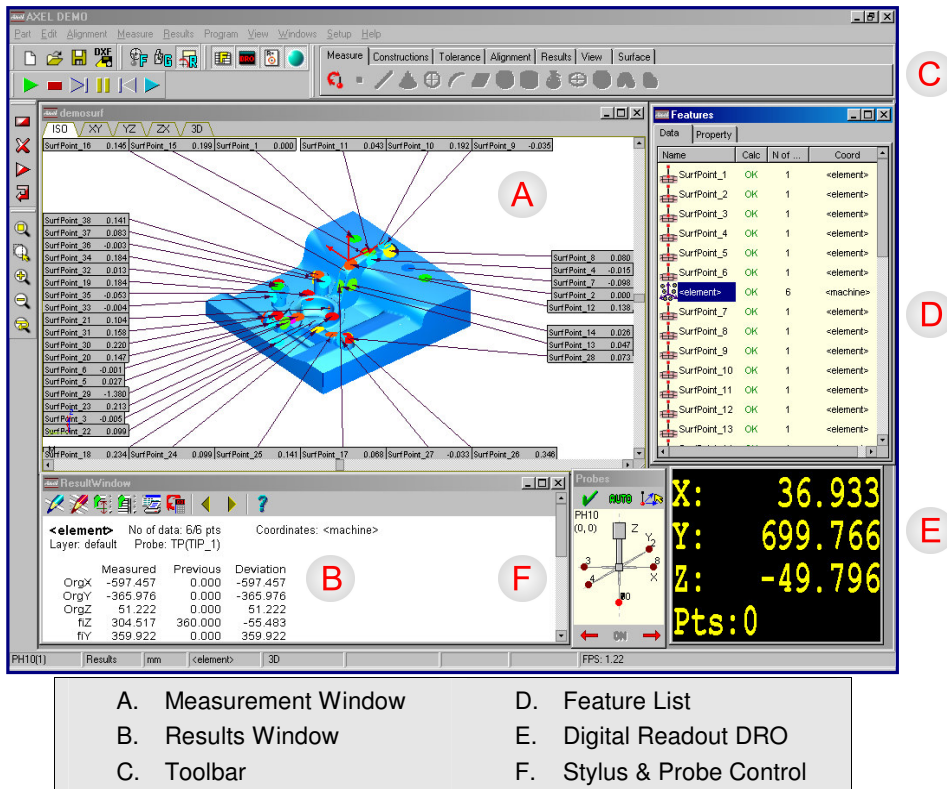


Axel Foundation Software

Integrated Metrology Software for Effort Free Measurement

Axel Foundation Software offers an array of features that not only lets you measure faster & more accurately, but also uses all of the features of Microsoft Windows graphical interface for display, interrogation and reporting.

Axel Main Screen



- Geometrical, surface & pipe measurement
- Feature storage with measured features shown in the graphical display. Select features or CAD from graphical view
- Full dimensional & geometric tolerancing
- CAD-like feature constructions, eg. distance, intersection, translation, rotation & projection
- CAD import (IGES & DXF as standard). CAD interrogation to extract geometric features from CAD model
- Multiple Coordinate Systems & extensive alignment options with graphical representation in *Measurement Window*
- Reverse Engineering direct to CAD
- Multiple measure window part views with graphical zoom & rotate, solid or wire frame views
- DDE / file / serial data export to MS Excel & SPC
- Graphical results boxes in *Measurement Window* & reports
- User configurable, fully featured text & *Graphical Report Generator*
- Client / drawing specific stored feature names
- Export results report to MS Excel, HTML or PDF

Results

Circle_2 No of data: 15/15 pts Coordinates: <machine>
15PC: Ins Layer: default Probe: PH6 Touch Probe(TIP_1)

	Measured	Nominal	Deviation	Up-Tol	Lo-Tol	in/out	Out-Tol
Dia	127.043	127.000	0.043	0.100	-0.050	in	+++
X	-206.366	-206.400	0.034	0.150	-0.150	in	++
Y	40.622	41.000	-0.378	0.150	-0.150	out	-0.228
Z	-410.007	-410.000	-0.007	0.150	-0.150	in	-
Rdns	0.029		0.040			in	++++

Projection: XY of <machine>

0.029 mm

Meas

Up-Tol

Nom

Lo-Tol

Results Window

Displays the results of the currently measured feature with a graphical display of point's distribution and tolerance sketch. Define the format of selected results from the top buttons menu

Features

Name	Calc	N...	Coord
DATUM_P...	OK	4	
Circle_1	OK	4	
Line_1	OK	2	
<element>	OK	3	
Line_2	OK	2	
Line_3	OK	2	<element>
Line_4	OK	2	<element>
Line_5	OK	2	<element>
Line_6	OK	2	<element>
Line_7	OK	2	<element>
Line_8	OK	2	<element>
Line_9	OK	2	<element>
Line_10	OK	2	<element>
Plane_1	OK	4	<element>

Feature List Window

Each measured feature recorded in this list can be used for selection and alteration of feature properties such as name, layer, projection and reference system

View point

Rotation: 120

Elevation: 20

XY YZ ZX

OK Cancel Help

View Point

Adjust the point for each view to have true 3D perspective of your measured component

Measure Constructions Tolerance Alignment Results View Surface

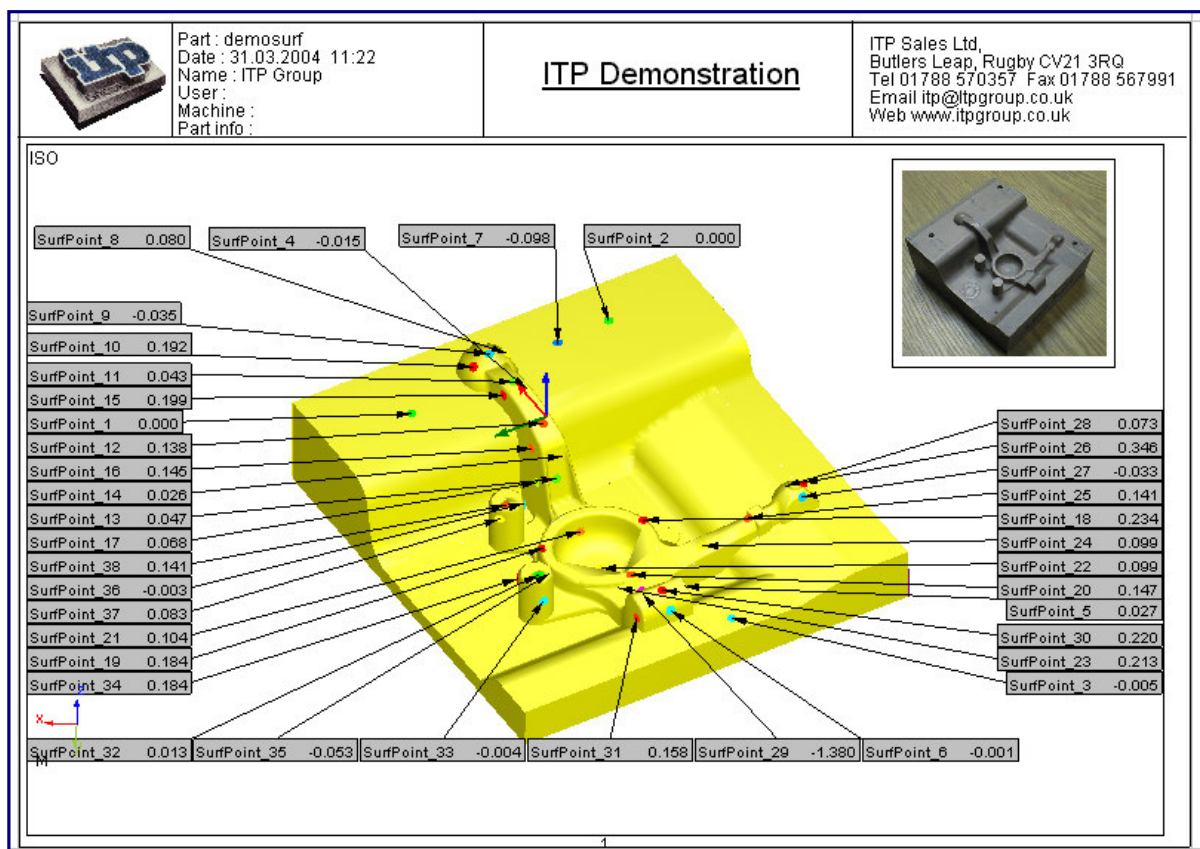
Toolbar

All measurement control functions can be accessed through icon buttons. Customise for individual operators / tasks and save & retrieve as required

Axel Report Generator

Axel Report Generator - an integral part of Axel Foundation software, allows inspection results to be presented in both numerical and graphical formats. The strength of the Axel reporting facility lies in the ability to customise reports to meet the needs of the operator, client or external quality bodies.

The Axel Report Generator enables you to visually design quality inspection reports that contain imported pictures / logos / text / graphics / individual results and multiple part views. Inspection notes can also be attached as required. Previously designed reports may also be saved as templates for future use.



Features

- Multi-Page templates stored on disk with configurable page overlay across all pages
- Multiple measure window views may be placed & sized anywhere on the form
- Import standard Axel part-header
- Import Axel text results for placement in graphical reports
- Import or create Bitmaps / JPEGs / textboxes / call-out boxes / lines / arrows
- Simple-to-use 'click & drop' form design



Axel Foundation Software

Minimum System Requirements

- Microsoft Windows 98SE / 2000 / XP*
- Intel Pentium III Processor*
- 256 MB Ram*
- 40 GB Hard Disk Space*
- Nvidia OpenGL Graphics Card*
- 1 Serial Port (2 if Renishaw PH10 probe required)*
- 17" Monitor (Recommended)*
- Colour Printer (Recommended)*

For Further Information Contact:

ITP Group Ltd, Butlers Leap, Rugby, Warwickshire, CV21 3RQ	Tel. +44 (0) 1788 570 357 Fax. +44 (0) 1788 567 991 Email. itp@itpgroup.co.uk Web. www.itpgroup.co.uk
--	--